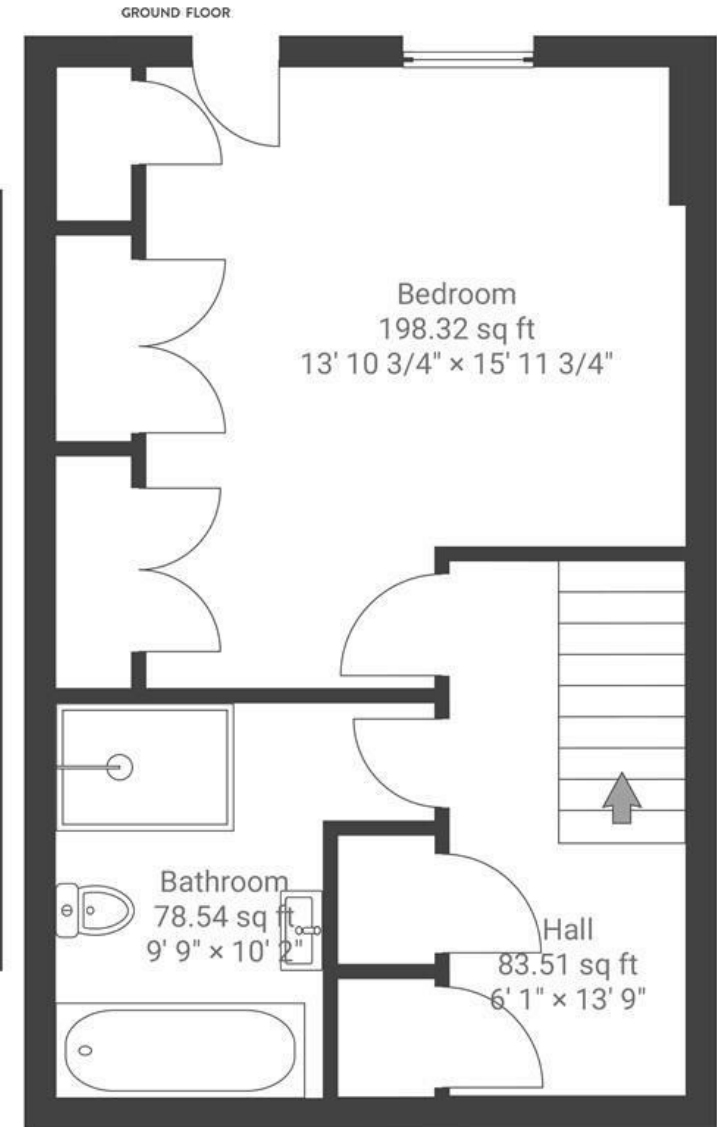


# Hampton Hall

## REDLAND

APPROXIMATE FLOOR AREA  
71.07 SQM / 765 SQFT



Boardwalk

# 1a Melville Road , BRISTOL



£365,000



1 Bedrooms



BS6 6PA



1 Bathrooms

*"I've loved the tranquility of living here, sitting on the balcony on a Summers' day you really could be in the countryside, not five minutes walk from Cotham Hill. The house is just so easy to live in, being so new everything works perfectly and efficiently, it's been a wonderful retreat."*

